

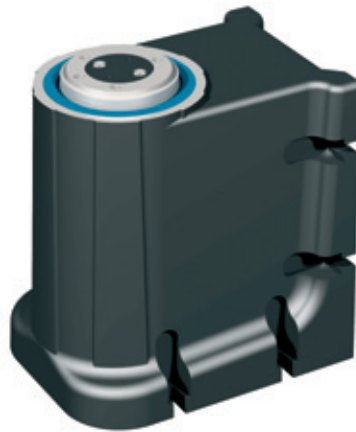
# Indexing Table/ Rotary Axis

# RDH-XS



RDH-XS as rotary axis

RDH-XS as indexing table



## Features

- with HarmonicDrive® gear
  - extremely and stiff drive bearing
  - zero backlash and high torsion stiffness
- reduction 1:50 or 1:100
- drive motors selectable
  - stepping motor (with encoder) or
  - DC servo motor (without brushes) or
  - DC servo motor (with brushes)
- protection type IP 65
- rust-proof design
- transmission accuracy < 2,0 arcmin
- repeatability < ± 1,0 arcmin
- maintenance-free
- Options:
  - different drive motors
  - own motor adaptation
  - available on request, different gear reductions

## Order Key

26600X XXXX

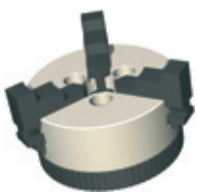
**Gear reduction**  
 0 = 100  
 1 = 50

0 = Standard

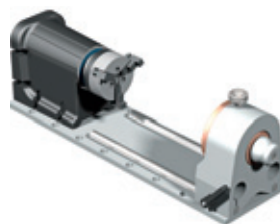
**Motors**  
 0 = Stepping motor  
 1 = DC servo motor (without brushes)  
 2 = DC servo motor (with brushes)

0 = Standard

## Accessory



**Clamping Chuck**  
 3-jaw chuck Ø 65  
 incl. adapter  
 Item no.: 269060 3065



**Tailstock Unit RE XS**  
 for RDH-XS  
 Item no.: 269100 0020 (200 mm)  
 Item no.: 269100 0030 (300 mm)  
 Item no.: 269100 0040 (400 mm)  
 Item no.: 269100 0050 (500 mm)

Image: RDH-XS with Tailstock unit RE XS and 3-jaw chuck

# Indexing Table/Rotary Axis

# RDH-XS

## Technical Data

|  | Stepping Motor<br>MS 045 HT *    |       | DC-Servo Motor<br>MD 100 |       | DC-Servo Motor<br>RE 40 |       |
|--|----------------------------------|-------|--------------------------|-------|-------------------------|-------|
| <b>Reduction ratio</b>                           | 1:50                             | 1:100 | 1:50                     | 1:100 | 1:50                    | 1:100 |
| <b>Nominal drive revolution</b> [1/min]          | 5                                | 2     | 60                       | 30    | 60                      | 30    |
|  | at 1500 Hz (225 1/min)           |       | at 1100 1/min            |       | at 1100 1/min           |       |
| <b>Max. drive revolution</b> [1/min]             | 24                               | 12    | 70                       | 35    | 70                      | 35    |
|  | at 8000 Hz (1200 1/min)          |       | --                       |       | --                      |       |
| <b>Nominal torque</b> [Nm]                       | 5                                | 7     | 5                        | 7     | 5                       | 7     |
|  | at 1500 Hz (225 1/min)           |       | --                       |       | --                      |       |
| <b>Max. torque</b> (temporary) [Nm]              | --                               | --    | 5                        | 7     | 5                       | 7     |
| <b>Nominal holding torque</b> (static load) [Nm] | 5                                | 7     | 5                        | 7     | 5                       | 7     |
| <b>Max. load capacity of the gear</b> [Nm]       | 9                                | 14    | 9                        | 14    | 9                       | 14    |
|  | Limit for repeatable peak torque |       |                          |       |                         |       |
| <b>Dynamic load rate C</b> [N]                   | 392                              |       |                          |       |                         |       |
| <b>Static load rate C<sub>0</sub></b> [N]        | 392                              |       |                          |       |                         |       |

\* Values at half-step operation

## Scale Drawings

