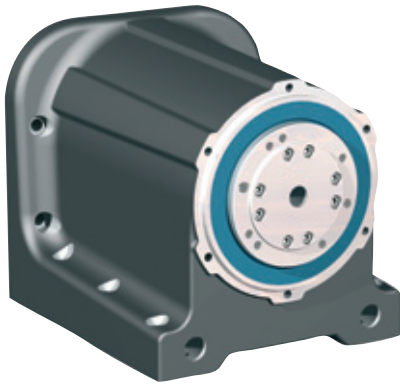


Indexing Table/ Rotary Axis

RDH-S



RDH-S as rotary axis
(hollow shaft)

RDH-S as indexing table
(solid shaft)



Features

- with HarmonicDrive® gear
 - extremely loadable and stiff drive bearing
 - zero backlash and high torsion stiffness
 - reduction 1:51 or 1:101
 - drive motors selectable
 - stepping motor (with encoder) or
 - DC servo motor (without brushes) or
 - DC servo motor (with brushes)
 - protection type IP 65
 - rust-proof design
 - transmission accuracy < 1,5 arcmin
 - repeatability < ± 6 arcsec
 - optionally, in solid shaft or quill design
 - maintenance-free
- Options:
- other drive motors
 - own motor adaptation
 - upon request, different gear reductions available

Order Key

2 6 6 1 X X X X X X

Flanschelle
0 = Vollwelle
1 = Hohlwelle

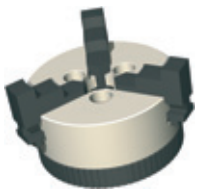
Getriebeuntersetzung
0 = 101
1 = 51

0 = Standard

Motoren
0 = Schrittmotor
1 = DC-Servomotor (bürstenlos)
2 = DC-Servomotor (bürstenbeh.)

0 = Standard

Accessory



Clamping Chuck
3-jaw chuck Ø 65
Item no.: 269060 3065



Clamping Chuck
3-jaw chuck Ø 80
Item no.: 269060 2080



Tailstock Unit RE S
for RDH-S
Item no.: 269100 1020 (200 mm)
Item no.: 269100 1030 (300 mm)
Item no.: 269100 1040 (400 mm)
Item no.: 269100 1050 (500 mm)

Indexing Table/Rotary Axis

RDH-S

Technical Data

	Stepping Motor MS 045 HT *		DC-Servo Motor MD 100		DC-Servo Motor RE 40	
Reduction ratio	1:51	1:101	1:51	1:101	1:51	1:101
Nominal drive revolution [1/min]	4	2	22	11	22	11
Max. drive revolution [1/min]	at 1500 Hz (225 1/min)		at 1100 1/min		at 1100 1/min	
	24	12	59	30	69	35
Nominal torque [Nm]	at 8000 Hz				--	
	7	11	7	11	4,6	9
Max. torque (temporary) [Nm]	at 1500 Hz				--	
	--	--	7	11	7	11
Nominal holding torque (static load) [Nm]	7	11	7	11	7	11
Max. load capacity of the gear [Nm]	18	28	18	28	18	28
Dynamic load rate C [N]	Limit for repeatable peak torque					
	5800					
Static load rate C₀ [N]	8600					

* Values at half-step operation

Scale Drawings

